

MONTHLY MEMBERSHIP PROGRESS REPORT

LOCATION INDIA

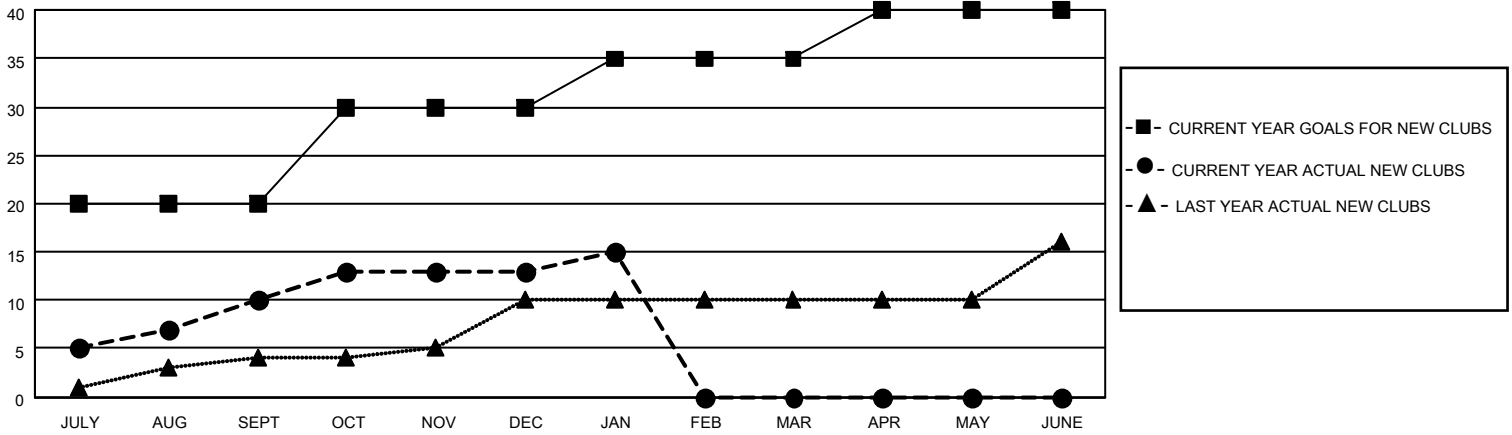
District 317 E

Results as of: 1/31/2022

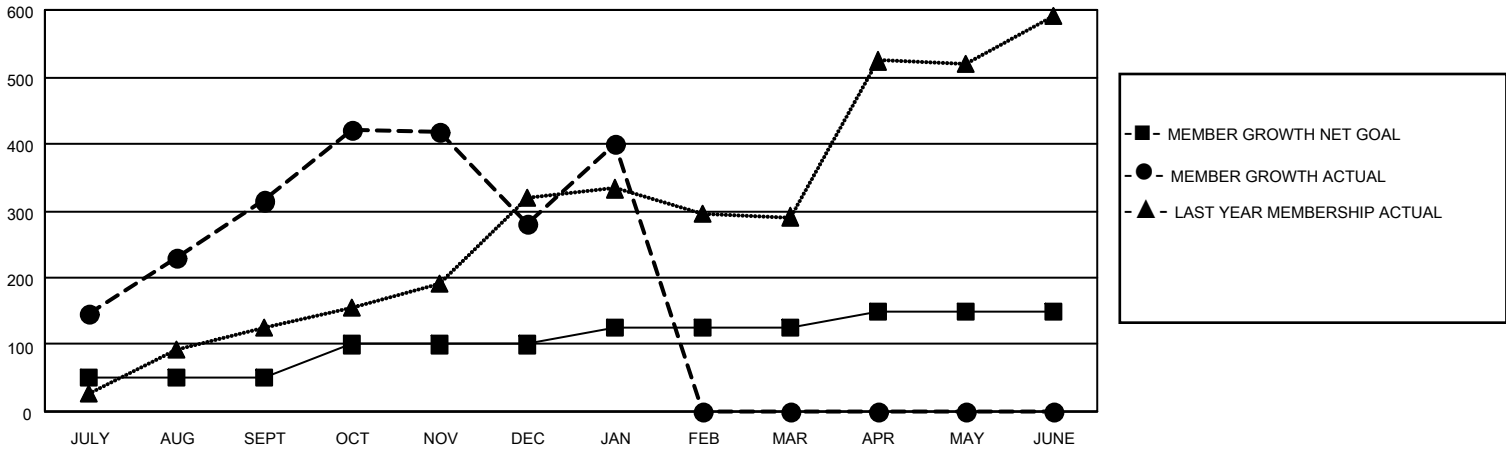
Clubs			
RESULTS FOR 2021-2022			
QUARTER	NEW CLUB GOAL	NEW CLUBS	DROPPED CLUBS
JULY/AUG/SEPT	20	10	0
OCT/NOV/DEC	10	3	4
JAN/FEB/MAR	5	2	0
APR/MAY/JUNE	5	0	0

Members			
RESULTS FOR 2021-2022			
QUARTER	MEMBER GROWTH NET GOAL	MEMBER GROWTH ACTUAL	DROPPED MEMBERS ACTUAL (including transfers)
JULY/AUG/SEPT	50	351	33
OCT/NOV/DEC	50	130	165
JAN/FEB/MAR	25	142	1
APR/MAY/JUNE	25	0	0

GOALS AND ACTUAL NEW CLUBS CUMULATIVE



GOALS AND ACTUAL MEMBERS CUMULATIVE



DROPPED CLUBS: 4

40 CLUBS OF 80 ADDED 1 OR MORE NEW MEMBERS

GENDER DISTRIBUTION

MALE	2,100 (74.92%)
FEMALE	703 (25.08%)
NON BINARY	0 (0.00%)
PREFER NOT TO ANSWER	0 (0.00%)

DROPPED MEMBERS

[CLICK HERE FOR CUMULATIVE MEMBERSHIP DATA](#)

DECEASED	5
CLUB CANCELLED	98
OTHER	96
TOTAL	199

TOTAL FAMILY UNIT MEMBERS 882

FAMILY MEMBERS PAYING HALF DUES 526